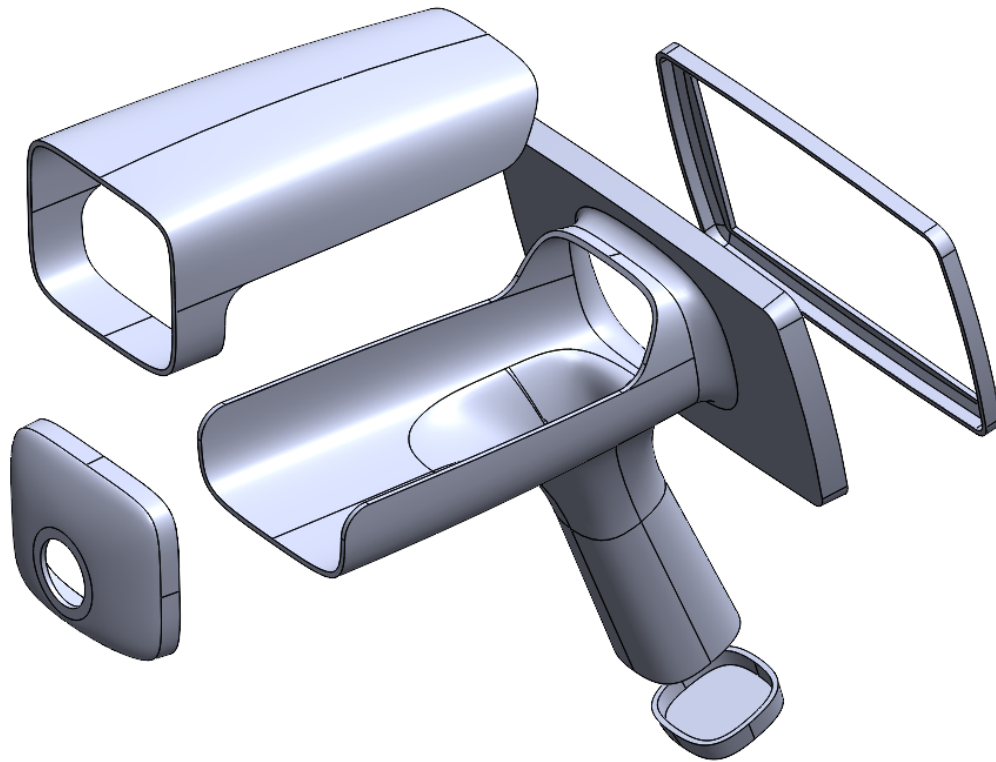


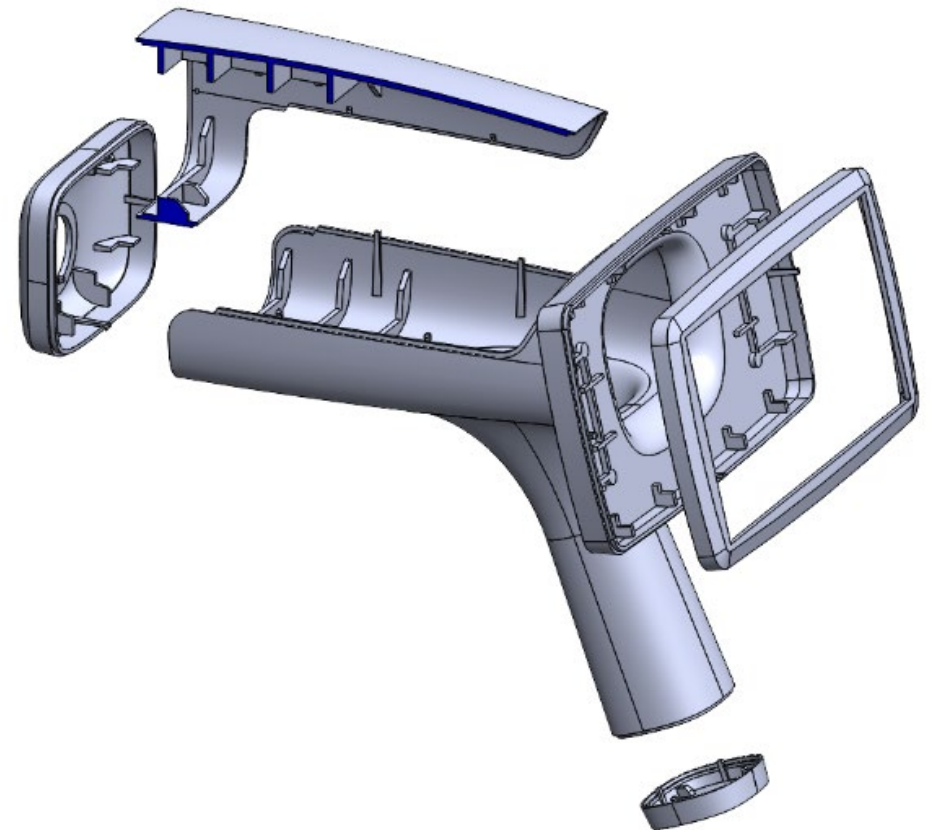
SESSION 1

10 + HOURS



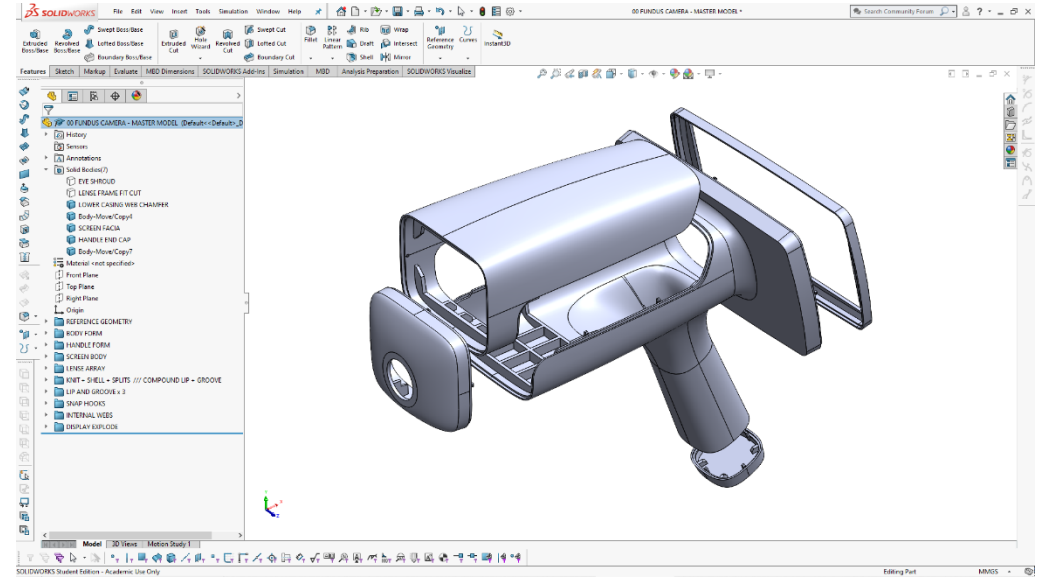
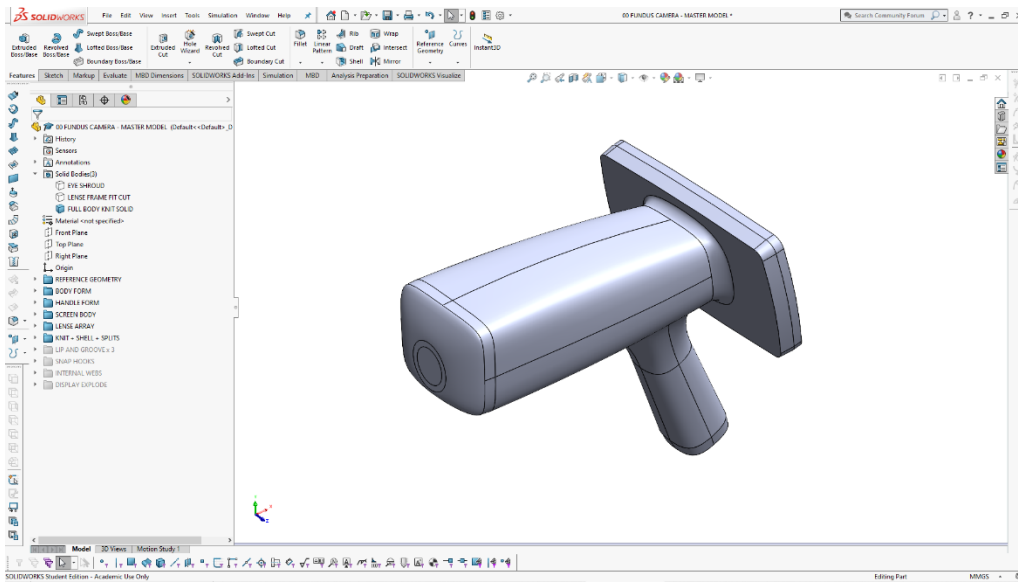
SESSION 2

10 + HOURS



2.5 'WORKING-DAYS'

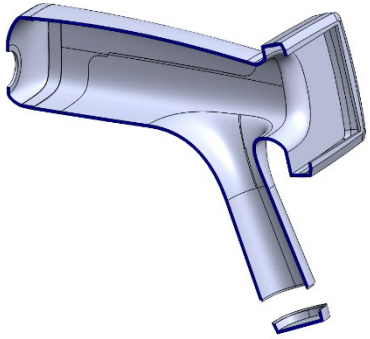
MARKETABLE PACE OF PRODUCTIVITY ...?



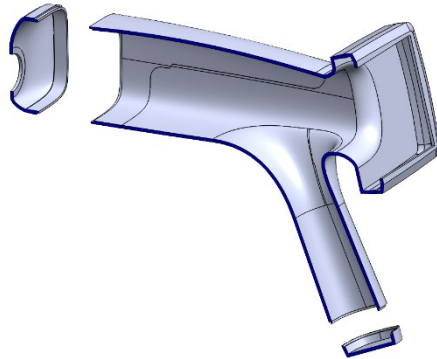
- ▶ REFERENCE GEOMETRY
 - ▶ (-) BASE REFERENCE GEOMETRY
 - ▶ IMAGE REFERENCE
- ▶ BODY FORM
 - ▶ TRANSITION PROFILE PLANE
 - ▶ BODY LEFT PLANE
 - ▶ BODY MID PLANE HORIZONTAL
 - ▶ UPPER BODY LOFT
 - ▶ LOWER BODY LOFT
- ▶ HANDLE FORM
 - ▶ HANDLE
 - ▶ HANDLE TRANSITION
- ▶ SCREEN BODY
 - ▶ SCREEN PLANE
 - ▶ CAMERA FRAME PROFILE EXTRUDE
 - ▶ SCREEN TRANSITION
 - ▶ SCREEN FACIA ARRAY
- ▶ LENSE ARRAY
 - ▶ LENSE HOUSING BASE EXTRUDE
 - ▶ LENSE HOUSING PLANE
 - ▶ LENSE FACIA PLANAR SURFACE
 - ▶ LENSE HOUSING TRANSIATIONAL LOFT
 - ▶ LENSE INNER PROFILE SPLIT
 - ▶ LENSE FRAME
 - ▶ EYE SHROUD
 - ▶ LENSE FRAME FIT CUT
- ▶ KNIT + SHELL + SPLITS
 - ▶ FULL BODY KNIT SOLID

- ▶ BODY FORM
- ▶ HANDLE FORM
- ▶ SCREEN BODY
- ▶ LENSE ARRAY
- ▶ KNIT + SHELL + SPLITS
 - ▶ FULL BODY KNIT SOLID
 - ▶ FULL BODY SHELL
 - ▶ (-) SPLIT PROFILE
 - ▶ LIP + GROOVE REFERENCE GEOMETRY
 - ▶ REF SURFACE OFFSET
 - ▶ Surface-Trim1
 - ▶ Thicken1
 - ▶ Body-Move/Copy1
 - ▶ Combine1
 - ▶ CASING SPLIT
 - ▶ LIP + GROOVE DEVELOPMENT
 - ▶ LIP AND GROOVE x 3
 - ▶ HANDLE CAP - LIP + GROOVE - LIP + GROOVE TOOL
 - ▶ SCREEN LIP + GROOVE - CUT EXTRUDE + SOLID EXTRUDE METHOD
 - ▶ LENSE ARRAY LIP + GROOVE - - SWEEPED PROFILE - SWEEPED CUT METHODS
 - ▶ SNAP HOOKS
 - ▶ HANDLE CAP SNAP HOOKS
 - ▶ SCREEN FACIA SNAP HOOKS
 - ▶ LENSE ARRAY SNAP HOOKS
 - ▶ MAIN BODY SNAP HOOKS
 - ▶ INTERNAL WEBS
 - ▶ HANDLE WEBS
 - ▶ SCREEN WEBS
 - ▶ LENSE ARRAY WEBS
 - ▶ MAIN BODY CASING
 - ▶ DISPLAY EXPLODE
 - ▶ Body-Move/Copy4
 - ▶ Body-Move/Copy5
 - ▶ Body-Move/Copy6
 - ▶ Body-Move/Copy7

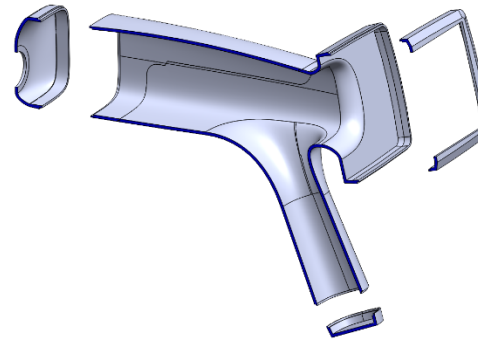
07a – LIP + GROOVE – HANDLE CAP
SW lip + groove tool method



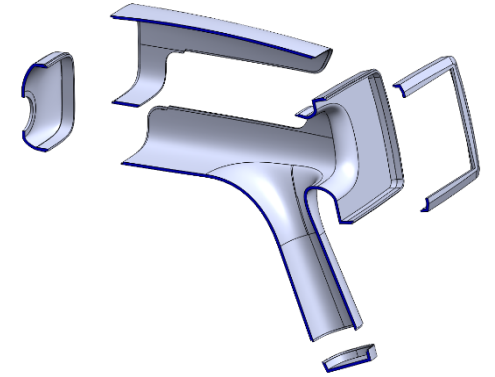
07b – LIP + GROOVE – SCREEN FACIA
– profile cut extrude + profile extrude method



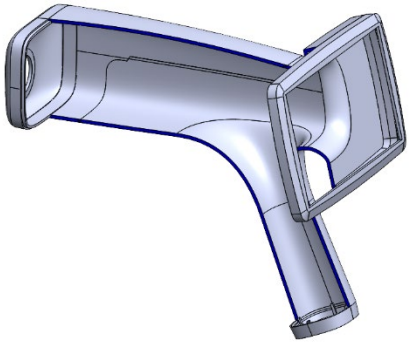
07c – LIP + GROOVE – LENS ARRAY
swept cut + sept profile method



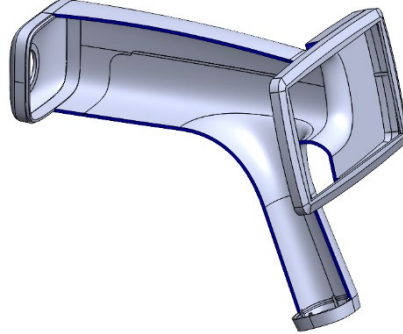
07d – LIP + GROOVE – MAIN BODY CASING
off-set surface-+ thicken + combine method



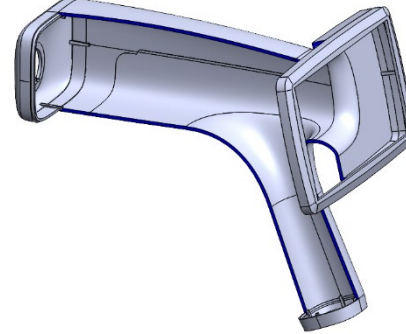
08a – SNAP HOOKS + GROOVES –
HANDLE CAP



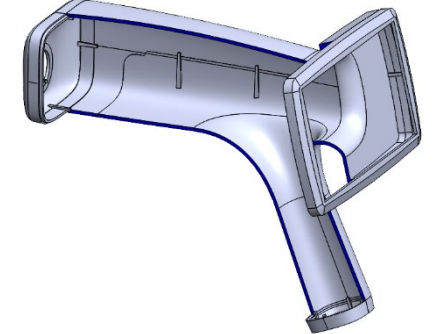
08b – SNAP HOOKS + GROOVES -
SCREEN FACIA



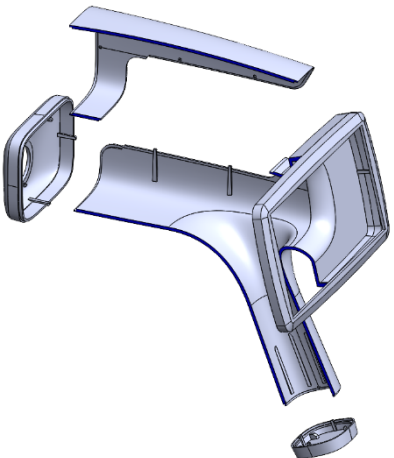
08c – SNAP HOOKS + GROOVES –
LENS ARRAY



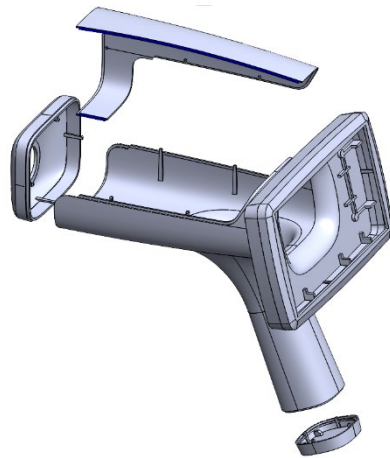
08d – SNAP HOOKS + GROOVES –
MAIN BODY CASING



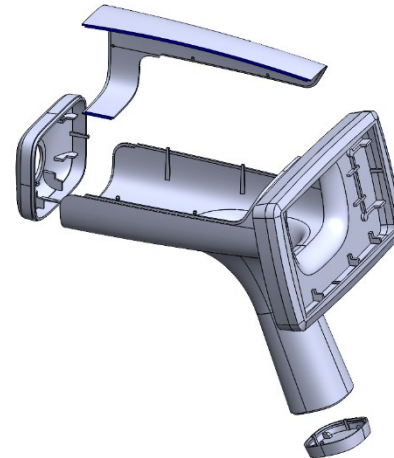
09a – INTERNAL RIBS – HANDLE CAP



09b – INTERNAL RIBS – SCREEN FACIA



09c – INTERNAL RIBS – LENS ARRAY



09D – INTERNAL RIBS – MAIN BODY CASING

